

FREE ENTRANCE

EXPLORE THE ANGOULEME MUSEUM

A museum for all, open to all



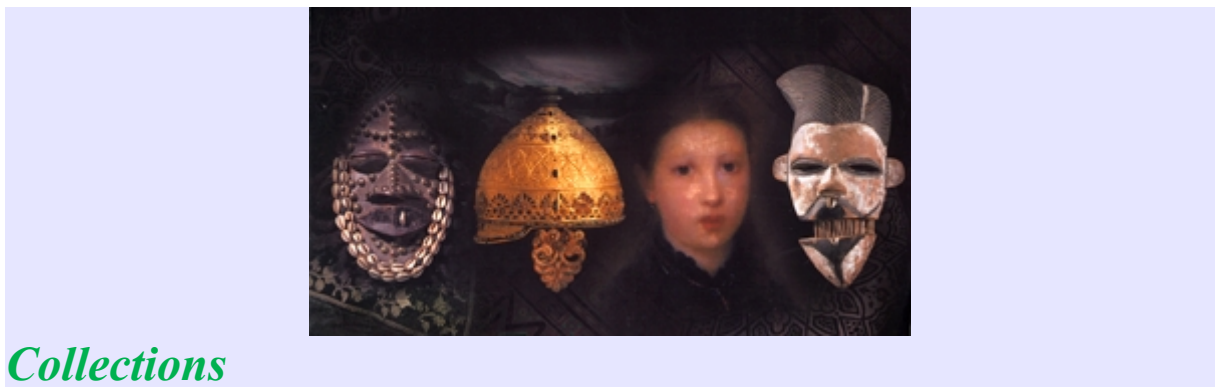
History of the Angoulême Museum

Explore the museum

Settled in the old Diocese, right next to the Saint-Pierre cathedral, the Museum of Angoulême presents various collections of archaeology from the Charente region, non-European arts and Fine arts.

Thanks to the diversity of these collections, the Museum illustrates various points of view, stories and ways of life. But the Museum is first a place where people live, share, exchange and are open to others.

Free admission, comfortable rooms and diversified activities guarantee availability and personal enrichment to all.



Collections

Archaeology from the Charente region

Explore the geology of the Charente region, the natural environment and the evolution of prehistoric cultures.

Learn about the material and cultural practices resulting from settlement, testimonies of aristocratic and religious life from the Middle Ages.

Arts from Africa and Oceania

Discover at the museum one of the most important collections of art from Africa and Oceania in France. Understand the use of objects from everyday life, masks and ritual sculptures, thanks to a selection of major works representative of these cultures.

Fine Arts

Discover in the museum rooms a collector's lounge and a studio belonging to the artists from the Charente region, and appreciate a selection of paintings, sculptures, ceramics and weapons from the 16th to the 20th century.

Plan your visit

Services offered to help you exploring the museum

Instructions available at front desk and in the museum rooms
French/English Audio guides for adults and children
Free hare and hounds game for children from 4 to 10
Museum shop

Programme for everyone

- Guided tours
- Conferences
- Workshops (adults, families, children)
- Movies....

The programme is available on our website and at the museum's front desk.
All the activities are accessible for people with disabilities

Groups

Guided tours and workshops are available for groups
School groups have free access to all services
Visits can be adapted for groups of people with disabilities
For your comfort, groups are welcome with advanced reservation.

Admission from 1.10 to 4.20 euros
Museum annual membership from 21 to 53 euros (individuals, families, associations and professionals)

Contact : mediation_musee@mairie-angouleme.fr

Practical information

FREE ENTRANCE

Open all year, from Tuesday to Sunday 10am to 6pm
Closed on Mondays and on January 1st, May 1st, November 1st and December 25th
Entrance by the Square Girard II through the garden.

Museum of Angoulême

1 rue de Friedland – 16000 Angoulême - FRANCE

Phone 05 45 95 79 88 – Fax 05 45 95 98 26

musees@mairie-angouleme.fr

www.musee-angouleme.fr